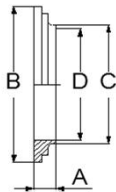


DS Svejsenippel
DS Welding Male part
DS Anschweißgewindestutz



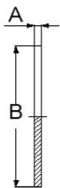
Size Inch [mm]	A	B	C	D				AISI 316L Polished
25	18.5	44	25	22.6				5011 025-6
38	20	58	38	35.6				5011 038-6
51	20	72	51	48.6				5011 051-6
63.5	24	88	63,5	60.3				5011 063-6
76	24	100	76,1	72				5011 076-6
101.6	24	130	101,6	97.6				5011 101-6



DS Svejsekrave
DS Welding Liner
DS Anschweißbundstutz



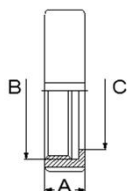
Size Inch [mm]	A	B	C	D				AISI 316L Polished
25	11	40	25	22.6				5012 025-6
38	11	54	38	35.6				5012 038-6
51	11	68	51	48.6				5012 051-6
63.5	12	84	63,5	60.3				5012 063-6
76	12	96	76,1	72				5012 076-6
101.6	12	124	102	97.6				5012 101-6



DS Blindskive
DS Blank
DS Blindscheibe



Size Inch [mm]	A	B				AISI 316L Polished
25	3	40				5013 025-6
38	3	54				5013 038-6
51	3	68				5013 051-6
63.5	4	84				5013 063-6
76	4	96				5013 076-6
101.6	4	124				5013 101-6



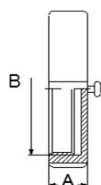
DS Omløber

DS Nut

DS Mutter



Size Inch [mm]	A	B	C	AISI 304 Polished		
25	20	44	35	5003 025		
38	20	58	48,5	5003 038		
51	22	72	62,5	5003 051		
63.5	24	88	76,5	5003 063		
76	25	100	88,5	5003 076		
101.6	28	130	117	5003 101		



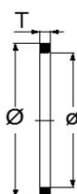
DS Blindomløber / Kæde

DS Blind nut / Chain

DS Blindmutter / Kette



Size Inch [mm]	A	B	Blind nut AISI 304	Chain AISI 304
25	20	44	5033 025	5000 025
38	20	58	5033 038	5000 038
51	22	72	5033 051	5000 051
63.5	24	88	5033 063	5000 063
76	25	100	5033 076	5000 076
101.6	28	130	5033 101	5000 101



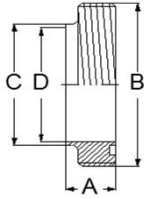
DS Pakning

DS Gasket

DS Dichtring



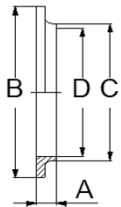
Size Inch [mm]	T	Ø	ø	EPDM	Nitril (NBR)	Viton (FPM)	
25	4.5	32	25	5004 025-E	5004 025-N	5004 025-V	
38	4.5	47	38	5004 038-E	5004 038-N	5004 038-V	
51	4.5	59	51	5004 051-E	5004 051-N	5004 051-V	
63.5	4.5	74	63.5	5004 063-E	5004 063-N	5004 063-V	
76	4.5	88	76.1	5004 076-E	5004 076-N	5004 076-V	
101.6	4.5	112	101.6	5004 101-E	5004 101-N	5004 101-V	



SMS Svejsenippel
SMS Welding Male part
SMS Anschweißgewindestutz



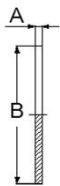
Size Inch [mm]	A	B	C	D				AISI 316L Polished
25	15	39,8	25	22,6				5311 025-6
38	20	59,8	38	35,6				5311 038-6
51	20	69,8	51	48,6				5311 051-6
63.5	24	84,8	63,5	60,3				5311 063-6
76	24	97,8	76,1	72,9				5311 076-6
101.6	25	132	####	97,6				5311 101-6



SMS Svejsekrave
SMS Welding Liner
SMS Anschweißbundstutz



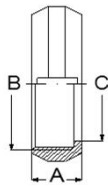
Size Inch [mm]	A	B	C	D				AISI 316L Polished
25	7.5	35.5	25	22,6				5312 025-6
38	9	55	38	35,6				5312 038-6
51	9	65	51	48,6				5312 051-6
63.5	9	80	63,5	60,3				5312 063-6
76	10	93	76,1	72,9				5312 076-6
101.6	12	127	####	97,6				5312 101-6



SMS Blindskive
SMS Blank
SMS Blindscheibe



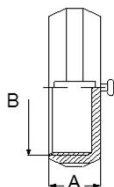
Size Inch [mm]	A	B				AISI 316L Polished
25	3	35.5				5313 025-6
38	3	55				5313 038-6
51	3	65				5313 051-6
63.5	4	80				5313 063-6
76	4	93				5313 076-6
101.6	4	127				5313 101-6



SMS Omløber
SMS Nut
SMS Mutter



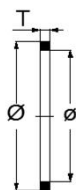
Size Inch [mm]	A	B	C	AISI 304 Polished		
25	20	40	32	5303 025		
38	25	60	48	5303 038		
51	26	70	60.5	5303 051		
63.5	30	85	74	5303 063		
76	30	98	87	5303 076		
101.6	30	132	117	5303 101		



SMS Blind omløber / Kæde
SMS Blind nut / Chain
SMS Blindmutter / Kette



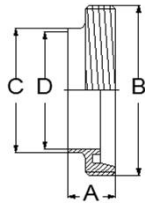
Size Inch [mm]	A	B	Blind nut AISI 304	Chain AISI 304
25	20	40	5333 025	5000 025
38	25	60	5333 038	5000 038
51	26	70	5333 051	5000 051
63.5	30	85	5333 063	5000 063
76	30	98	5333 076	5000 076
101.6	30	132	5333 101	5000 101



SMS Pakning
SMS Gasket
SMS Dichtring



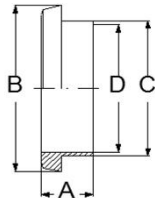
Size Inch [mm]	T	Ø	ø	EPDM	Nitril (NBR)	Viton (FPM)	
25	5.5	32	25	5304 025-E	5304 025-N	5304 025-V	
38	5.5	48	38	5304 038-E	5304 038-N	5304 038-V	
51	5.5	61	51	5304 051-E	5304 051-N	5304 051-V	
63.5	5.5	73	63.5	5304 063-E	5304 063-N	5304 063-V	
76	5.5	86	76.1	5304 076-E	5304 076-N	5304 076-V	
101.6	5.5	114	101.6	5304 101-E	5304 101-N	5304 101-V	



DIN Svejsenippel
DIN Welding Male part
DIN Anschweißgewindestutz



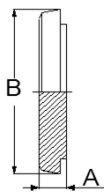
Size DIN [DN]	Inch C	A	B	DIN C	DIN D	Conical INCH to DIN	AISI 316L DIN sizes
10		21	28	13	10		5121 010-6
15		21	34	19	16		5121 015-6
20		24	44	23	20		5121 020-6
25	25	29	52	29	26	5131 025-6	5121 028-6
32		32	58	35	32		5121 032-6
40	38	33	65	41	38	5131 038-6	5121 040-6
50	51	35	78	53	50	5131 051-6	5121 050-6
65	63,5	40	95	70	66	5131 063-6	5121 065-6
80	76,1	45	110	85	81	5131 076-6	5121 080-6
100	101,6	54	130	104	100	5131 101-6	5121 100-6
125		46	160	129	125		5121 125-6
150		50	190	154	150		5121 150-6



DIN Svejsekrave
DIN Welding Liner
DIN Anschweißbundstutz



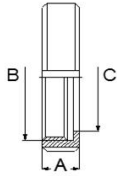
Size DIN [DN]	inch C	A	B	DIN C	DIN D	Conical INCH to DIN	AISI 316L DIN sizes
10		17	22,2	13	10		5122 010-6
15		17	28,2	19	16		5122 015-6
20		18	36,3	23	20		5122 020-6
25	25	22	44	29	26	5132 025-6	5122 028-6
32		25	50	35	32		5122 032-6
40	38	26	56	41	38	5132 038-6	5122 040-6
50	51	28	68,5	53	50	5132 051-6	5122 050-6
65	63,5	32	86	70	66	5132 063-6	5122 065-6
80	76,1	37	100	85	81	5132 076-6	5122 080-6
100	101,6	44	121	104	100	5132 101-6	5122 100-6
125		34	150	129	125		5122 125-6
150		37	176	154	150		5122 150-6



DIN Blindskive
DIN blank
DIN Blindkegel



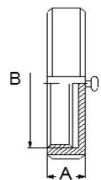
Size DIN [DN]	A	B	AISI 316L Polished
25	13	44	5123 028-6
40	13	56	5123 040-6
50	14	68,5	5123 050-6
65	16	86	5123 065-6
80	16	100	5123 080-6
100	20	121	5123 100-6



DIN Omløber
DIN Nut
DIN Mutter



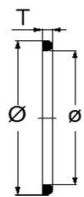
Size DIN [DN]	A	B	C	AISI 304 Polished
10	18	28	19	5103 010
15	18	34	25	5103 015
20	21	44	31	5103 020
25	21	52	36	5103 028
32	21	58	42	5103 032
40	21	65	49	5103 040
50	21	78	62	5103 050
65	25	95	80	5103 065
80	30	110	94	5103 080
100	31	130	115	5103 100
125	35	160	138	5103 125
150	40	190	164	5103 150



DIN Blind omløber / Kæde
DIN Blind nut / Chain
DIN Blindmutter / Kette



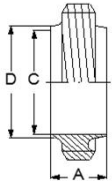
Size DIN [DN]	A	B	Blind nut AISI 304	Chain AISI 304
25	21	52	5133 028	5000 025
40	21	65	5133 040	5000 038
50	21	78	5133 050	5000 051
65	25	95	5133 065	5000 063
80	29	110	5133 080	5000 076
100	31	130	5133 100	5000 101



DIN Pakning
DIN Gasket
DIN Dichtring



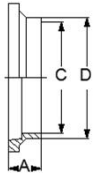
Size DIN [DN]	T	Ø	ø	EPDM	Nitril (NBR)	Viton (FPM)
10				5104 010-E		
15				5104 015-E		
20	4,5	33	23	5104 020-E		
25	5	40	30	5104 028-E	5104 028-N	5104 028-V
32	5	46	36	5104 032-E		
40	5	52	42	5104 040-E	5104 040-N	5104 040-V
50	5	64	54	5104 050-E	5104 050-N	5104 050-V
65	5	81	71	5104 065-E	5104 065-N	5104 065-V
80	5	95	85	5104 080-E	5104 080-N	5104 080-V
100	6	114	104	5104 100-E	5104 100-N	5104 100-V
125				5104 125-E		
150				5104 150-E		



RJT (BS 4825 del 5) Svejsenippel
RJT (BS 4825 part 5) Welding Male part
RJT (BS 4825 teil 5) Anschweißgewindestutz



Size Inch [mm]	A	C	D				AISI 316L Polished
25	21,5	22,2	25,4				5211 025-6
38	21,5	34,9	38,1				5211 038-6
51	21,5	47,6	50,8				5211 051-6
63.5	21,5	60,3	63,5				5211 063-6
76	21,5	73	76,2				5211 076-6
101.6	21,5	97,6	102				5211 101-6



RJT (BS 4825 del 5) Svejsekrave
RJT (BS 4825 part 5) Welding Liner
RJT (BS 4825 teil 5) Anschweißbundstutz



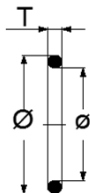
Size Inch [mm]	A	C	D				AISI 316L Polished
25	12,7	22,2	25,4				5212 025-6
38	12,7	34,9	38,1				5212 038-6
51	12,7	47,6	50,8				5212 051-6
63.5	12,7	60,3	63,5				5212 063-6
76	12,7	73	76,2				5212 076-6
101.6	12,7	97,6	102				5212 101-6



RJT (BS 4825 del 5) Omløber
RJT (BS 4825 part 5) Nut
RJT (BS 4825 teil 5) Mutter



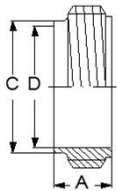
Size Inch [mm]	A		AISI 304 Hexagon Nut		
25	22,2		5203 025		
38	22,2		5203 038		
51	22,2		5203 051		
63.5	22,2		5203 063		
76	22,2		5203 076		
101.6	22,2		5203 101		



RJT (BS 4825 del 5) Pakning
RJT (BS 4825 part 5) Gasket
RJT (BS 4825 teil 5) Dichtring



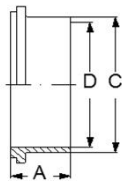
Size Inch [mm]	T	Ø	ø	EPDM	Nitril (NBR)		
25	6.6	39.9	26.7	5204 025-E	5204 025-N		
38	6.6	52.9	39.4	5204 038-E	5204 038-N		
51	6.6	65.3	52.1	5204 051-E	5204 051-N		
63.5	6.6	78	64.8	5204 063-E	5204 063-N		
76	6.6	90.7	77.5	5204 076-E	5204 076-N		
101.6	6.6	116.1	102.9	5204 101-E	5204 101-N		



IDF (BS 4825 del 4) Svejsenippel
IDF (BS 4825 part 4) Welding Male part
IDF (BS 4825 teil 4) Anschweißgewindestutz



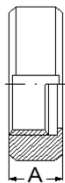
Size Inch [mm]	A	C	D				AISI 316L Polished
25	21.5	25,4	22,2				5411 025-6
38	21.5	38,1	34,9				5411 038-6
51	21.5	50,8	47,6				5411 051-6
63.5	21.5	63,5	60,3				5411 063-6
76	21.5	76,2	73				5411 076-6
101.6	30	102	97.6				5411 101-6



IDF (BS 4825 del 4) Svejsekrave
IDF (BS 4825 part 4) Welding Liner
IDF (BS 4825 teil 4) Anschweißbundstutz



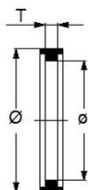
Size Inch [mm]	A	C	D				AISI 316L Polished
25	21.5	25,4	22,2				5412 025-6
38	21.5	38,1	34,9				5412 038-6
51	21.5	50,8	47,6				5412 051-6
63.5	21.5	63,5	60,3				5412 063-6
76	21.5	76,2	73				5412 076-6
101.6	30	102	97.6				5412 101-6



IDF (BS 4825 del 4) Omløber
IDF (BS 4825 part 4) Nut
IDF (BS 4825 teil 4) Mutter



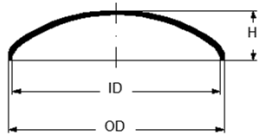
Size Inch [mm]	A		AISI 304 Round Nut		
25	30		5403 025		
38	30		5403 038		
51	30		5403 051		
63.5	30		5403 063		
76	30		5403 076		
101.6	35		5403 101		



IDF (BS 4825 del 4) Pakning
IDF (BS 4825 part 4) Gasket
IDF (BS 4825 teil 4) Dichtring



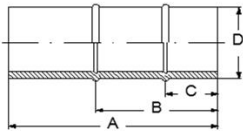
Size Inch [mm]	T	Ø	ø	EPDM	Nitril (NBR)		
25	5	32.5	23,2	5404 025-E	5404 025-N		
38	5	46.0	35,9	5404 038-E	5404 038-N		
51	5	59.5	48,6	5404 051-E	5404 051-N		
63.5	5	73.2	61,3	5404 063-E	5404 063-N		
76	5	86.5	74	5404 076-E	5404 076-N		
101.6	5	119	98,6	5404 101-E	5404 101-N		



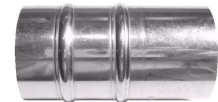
ISO Endebund
ISO End cap
ISO Gewölbter Boden



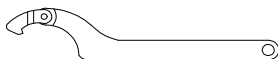
Size [mm]	OD	ID	H				AISI 316L Satin
25	25	21,8	12				8120 251269S
38	38	34,8	15				8120 381569S
51	51	47,8	19				8120 511569S
63,5	63,5	60,3	19				8120 631569S
76	76	72	27				8120 762069S
101,6	101,6	97,6	24,5				8120 102069S
125	129	125	34				8120 122069S
150	154	150	41				8120 152069S



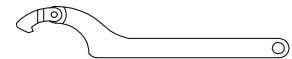
ISO Slangestuds
ISO Hose Nozzle
ISO Schlauchtülle



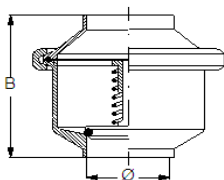
Size Inch [mm]	A	B	C	D				AISI 316L Polished
25	60	35	15	25,4				6500256
38	80	45	20	38,1				6500386
51	90	45	20	50,8				6500516
63,5	100	50	25	63,5				6500636
76	110	55	25	76,1				6500766
101,6	120	65	26	102				6501016



Hagenøgle med led
Hinged C-spanner



Size [mm]	[DN]				AISI 304
25-51	25-50				5406090
51-101,6	50-100				5490155



ISO Kontraventil
ISO Non Return Valve
ISO Tellerrückschlagventil



Size Inch [mm]	B	Ø	Open [bar]				AISI 316L EPDM
25	68,5	22,1	0,1-0,2				GK-025E6
38	80,5	34,8	0,1-0,2				GK-038E6
51	90	47,5	0,1-0,2				GK-051E6
63,5	95	60,2	0,1-0,3				GK-063E6
76	115	72,2	0,1-0,3				GK-076E6
101,6	155	97,6	0,1-0,4				GK-101E6